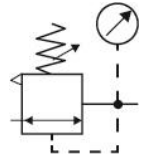




570.14 B



DRES.G12R.05-8B



Stainless steel regulators containing no non-ferrous metals for use in the food processing, chemical, mining, plant construction and special machinery industries as well as in the medical technology.

| | |
|-----------------------|--|
| Medium temperature | -20 to 80 °C |
| Ambient temperature | -20 to 80 °C |
| Housing | Stainless steel 1.4404 (AISI 316L) |
| Sealant | FKM |
| Diaphragms | PTFE on NBR carrier |
| Flow rate measurement | at $P_1 = 8$ bar, $P_2 = 6$ bar and pressure drop $\Delta p = 1$ bar |

Reversible, stainless steel pressure regulator with self-relieving design, stainless steel pressure gauge

| Art. No. | Type No. | Thread | Max. input pressure bar | Control range bar | Flow rate l/min | A mm | B mm | C mm | D mm |
|----------|-----------------|--------|-------------------------|-------------------|-----------------|-------|-------|------|-------|
| 101191 | 570.14 B | G 1/4 | 30 | 0,5 - 8 | 1300 | 64,0 | 160,0 | 37,0 | 122,0 |
| 101192 | 570.14 D | G 1/4 | 50 | 1 – 15 | 1300 | 64,0 | 160,0 | 37,0 | 122,0 |
| 129270 | DRES.G12R.05-8B | G 1/2 | 50 | 0,5 – 8 | 2800 | 109,0 | 160,0 | 39,0 | 121,0 |
| 129271 | DRES.G12R.1-15B | G 1/2 | 50 | 1 – 15 | 2800 | 109,0 | 160,0 | 39,0 | 121,0 |

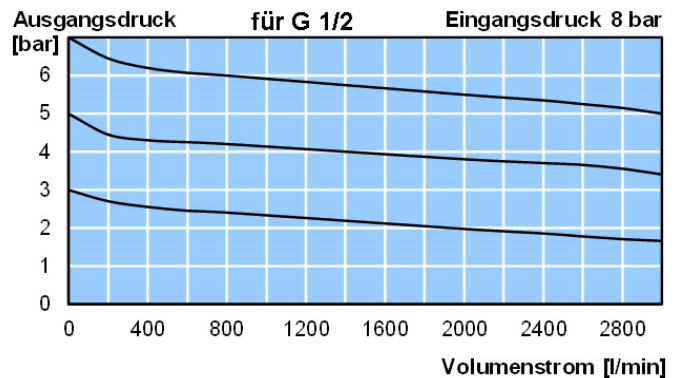
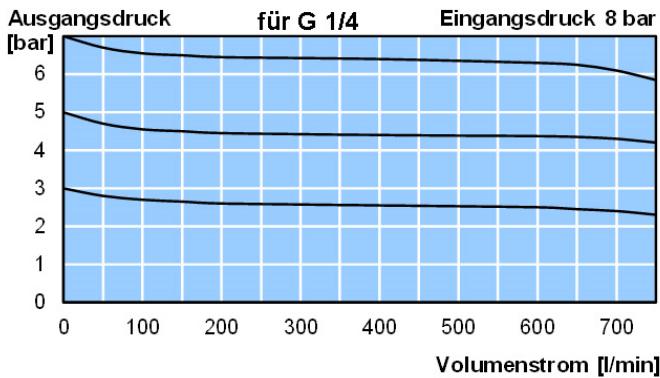
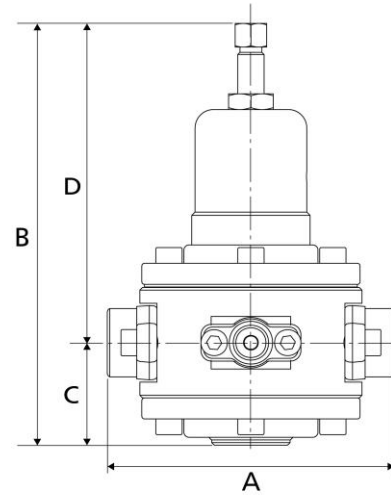
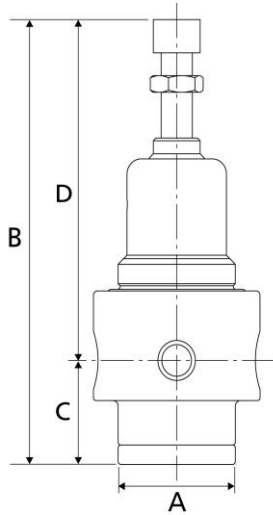
Non-reversible, stainless steel pressure regulator, for liquid media, without self-relieving design, stainless steel pressure gauge

| Art. No. | Type No. | Thread | Max. input pressure Bar | Control range Bar | Flow rate l/min | A mm | B mm | C mm | D mm |
|----------|------------------|--------|-------------------------|-------------------|-----------------|-------|-------|------|-------|
| 101195 | 571.14 B | G 1/4 | 30 | 0,5 - 8 | 1300 | 64,0 | 160,0 | 37,0 | 122,0 |
| 101196 | 571.14 D | G 1/4 | 50 | 1 – 15 | 1300 | 64,0 | 160,0 | 37,0 | 122,0 |
| 129272 | DRES.G12NR.05-8B | G 1/2 | 50 | 0,5 – 8 | 2800 | 109,0 | 160,0 | 39,0 | 121,0 |
| 129273 | DRES.G12NR.1-15B | G 1/2 | 50 | 1 – 15 | 2800 | 109,0 | 160,0 | 39,0 | 121,0 |

- NPT thread available on request
- Other control ranges, temperature ranges and FDA approval available on request

- Any liability is excluded in case of use of harmful and explosive media

- Feedback pressure regulators not suitable for liquid media



Accessories / spare parts

| Art. No. | Type No. | Description |
|----------|----------------|--|
| 101199 | 576/1 | Mounting bracket with nut M45x1.5 |
| 101200 | 576/3 | Mounting bracket with nut M50x1.5 |
| 101201 | 4084 | Pressure gauge Ø 63 mm, G 1/4 ET, 0 – 10 bar |
| 101202 | 4085 | Pressure gauge Ø 63 mm, G 1/4 ET, 0 – 16 bar |
| 101203 | 22.5704.4 | Set of wearing parts for G 1/4 (reversible) |
| 194360 | VTSDR14R50 | Set of wearing parts for G 1/4 (reversible) |
| 129671 | VTSDRES.G12.RÜ | Wear part set, stainless steel pressure regulator G 1/2 (revers.) |
| 101205 | 22.5714.4.16 | Set of wearing parts with PTFE diaphragm for G 1/4 (non-re.) |
| 194362 | VTSDR1450 | Set of wearing parts with PTFE diaphragm for G 1/4 (non-re.) |
| 129672 | VTSDRES.G12 | Wear part set, stainless steel pressure regulator G 1/2 (n. revers.) |